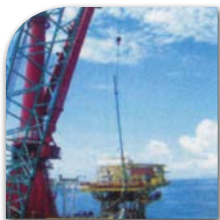


Heavy Lift Pipelay Vessel

LTS 3000



SapuraKencana
PETROLEUM



SapuraKencana Petroleum Berhad

Level 6, Menara SapuraKencana Petroleum
Solaris Dutamas, 1, Jalan Dutamas 1
50480 Kuala Lumpur, Malaysia
Tel: +603 6209 8000 Fax: +603 6209 3800

www.sapurakencana.com

SapuraKencana TL Offshore Sdn Bhd

(Formerly known as TL Offshore Sdn Bhd)

Offshore Construction Services

6th Floor, Sapura@Mines, 7 Jalan Tasik, The Mines Resort City,
43300 Seri Kembangan, Selangor, Malaysia
Tel: +603 8659 8884 Fax: +603 8659 3474

Queries: bizdevelopment@sapurakencana.com

LTS 3000

Principle Dimensions

Classification	: ABS A1 (E) Pipelay / Heavy Lift Vessel AMS (DPS-1)
Total Length	: 160.70M
Breadth Moulded	: 37.8M
Depth to work deck, Moulded	: 15.0M
Depth to freeboard deck, Moulded	: 9.1M
Draft Designed	: 6.5M (max.), 4.0M (min.)
Main Deck Strength	: 10 tonne / m ²
Free Deck Area	: 2000 m ²

Accommodation

5 x 1 Berth Cabins with Day Room	: 5 men
21 x 1 Berth Cabins	: 22 men
22 x 2 Berth Cabins	: 46 men
55 x 4 Berth Cabins	: 216 men
Total	: 289 men
Equipped with 2 Recreation Rooms, 1 Galley, 1 Prayer Room	

Pipelay Capabilities

Pipe Size	: 6" to 60" OD
Tension Capacity	: 200MT (2 nos. x 100MT each)
A & R Winch-Tension Capacity	: 200MT
Welding Stations	: 6 nos.
NDT Station	: 1 no.
Field Joint Stations	: 2 nos.
Davits	: 6 nos. x 50MT
Type of Stinger	: Floating Truss 160ft long 1 st Section, 60ft 2 nd Section

Main Crane

Main Hook Capacity	: 2722MT @ 27m Rad.
Aux. Hook Capacity	: 725MT @ 53m Rad.
Whip Hook Capacity	: 100MT @ 95m Rad.
Boom Length to Main Hook	: 75m
Boom Length to Auxiliary Hook	: 85m
Boom Length to Whip Hook	: 95m

Pipe Handling Cranes (2 Nos.)

Fixed Pedestal Cranes	: 2 each
Maximum Lifting Capacity	: 50MT @ 29m Rad.

Mooring System

150T Mooring Winches	: 10 nos.
Mooring Anchors	: 10 ea of 12.5MT Delta Flipper

Propulsion

Speed	: 11 knots
Engine	: Wartsila 8L26
Bow Thruster	: 1 x 1250KW
Stern Thruster	: 2 x 2400KW

Machinery

Main Generators	: 3 x 2600kW
Emergency Diesel Generator	: 1 x 1000kW
Fresh Water Maker (RO)	: 60T/day with 1 standby
Sewage Treatment Plant	: 2 nos. for 330
Air Compressors	: Approx. 2000cfm @ 10 bar
Machine Shop	: 1 ea

Tank Capacities

SWB/FW Tank (non-potable)	: 12465 m ³
FW Tank (Potable)	: 2942 m ³
F.O. Tank	: 2334 Tonne
Dirty Oil Tank	: 50.29 m ³
Lube Oil Tank	: 47 Tonne

Pumps

Ballast Pump	: 2 @ 360 m ³ /hr
Anti Heeling Pump	: 1 x 1600 m ³ /hr & 2 x 1400 m ³ /hr
FO Transfer Pump	: 2 @ 22.5 m ³ /hr
Fresh Water Transfer Pump	: 2 @ 35 m ³ /hr
Sewage Discharge Pump	: 1 x 10 m ³ /hr
Sludge Oil Pump	: 1 x 14.2 m ³ /hr
Bilge Pump	: 2 x 35 m ³ /hr
Fire & GS Pump	: 1 @ 100 m ³ /hr & 3 @ 160 m ³ /hr
Emergency Fire Pump	: 1 @ 100 m ³ /hr

Safety Equipment

4 x 90 capacity Life Boat	: 360
Life Jackets	: 200% coverage of the total maximum onboard
Life Buoys	: As per class & flag requirement
Rescue Boat (FRC)	: 1 no. x 25 Hp Boat
L/Boat (Rescue Boat)	: 2 nos.

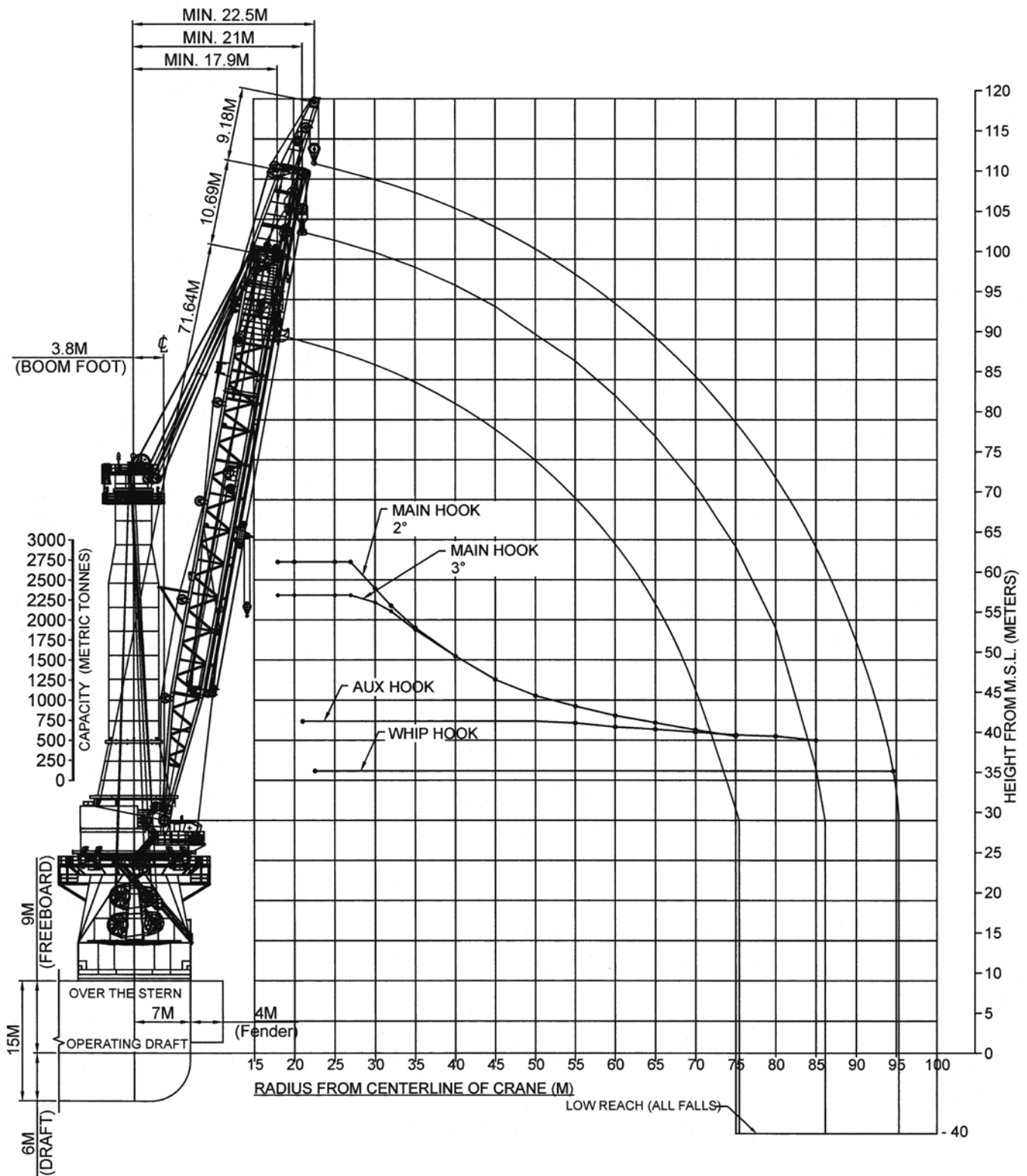
Radio Communications Equipment

SSB, DSC, Inmarsat C, VHF (GMDSS), GMDSS portable, Portable VHF, Air band VHF, UHF, Portable air bank VHF & Internet Line

Helicopter Navigation System

Helideck Capable of Handling S61-N Sikorsky type helicopter Gyro-compass, Sat Com, V-SAT, Radars, Radar transponders, EPIRB Radio Beacons, SatNav system DGPS

LTS 3000



LTS 3000

