

Derrick Pipelay Barge

SAPURAKENCANA 2000



SapuraKencana
PETROLEUM



SapuraKencana Petroleum Berhad

Level 6, Menara SapuraKencana Petroleum
Solaris Dutamas, 1, Jalan Dutamas 1
50480 Kuala Lumpur, Malaysia
Tel: +603 6209 8000 Fax: +603 6209 3800

www.sapurakencana.com

SapuraKencana TL Offshore Sdn Bhd

(Formerly known as TL Offshore Sdn Bhd)

Offshore Construction Services

6th Floor, Sapura@Mines, 7 Jalan Tasik, The Mines Resort City,
43300 Seri Kembangan, Selangor, Malaysia
Tel: +603 8659 8884 Fax: +603 8659 3474

Queries: bizdevelopment@sapurakencana.com

SAPURAKENCANA 2000

Principle Dimensions

Classification	: ABS*A1 Barge, Pipelay/Heavylift
Flag	: Malaysia
Total Length	: 120M
Breadth Moulded	: 40.1M
Depth Moulded	: 9M
Draft Designed	: 6M
Main Deck Strength	: 12.5 to 15 tonne / m ²
Free Deck Area	: 2000 m ²

Accommodation

8 x 1 Berth Cabins	: 8 men
14 x 2 Berth Cabins	: 28 men
66 x 4 Berth Cabins	: 264 men
Total	: 300 men
Recreation Rooms	: 2 ea (for clients & crew) complete with TV/Video room, Prayer room
Galley	: 150 men seating
Office / Conference Rooms	: 12 ea

Pipelay Capabilities

Pipe OD	: 6" to 60"
Tension Capacity	: 140MT (2 nos. x 70MT each)
Tension Capacity-1 A & R Winch	: 150 MT
Welding Station	: 5 nos.
NDT Station	: 1 no.
Field Joint Stations	: 2 nos.
Davits	: 6 nos. x 50 MT

Stinger

Type of Stinger	: Articulated 4 section Ballastable Stinger
-----------------	--

Main Crane

Main Hook Capacity Tie-Back	: 2000MT @ 32m
Main Hook Capacity Fixed	: 1600MT @ 32m
Main Hook Capacity Revolving	: 1200MT @ 32m
Aux. Hook Capacity	: 300MT @ max. rad. 70m
Whip Hook Capacity	: 50MT @ max. rad. 98.7m
Boom Length to Main Hook	: 75.00m
Boom Length to Auxiliary Hook	: 87.20m
Boom Length to Whip Hook	: 95.77m

Crawler Crane

250T	: 1 each
Crane Boom Length	: 42.7m

Mooring System - 100T Max.

150T Mooring Winches (Electrical)	: 12 nos.
Mooring Anchors	: 13 nos. x 12MT (Delta Flipper)
Storm Anchor	: 1 no. 10MT

Machinery

Main Generators	: 6 x 1230kW, 440V 60Hz 3 Phase
Emergency Diesel Generator/ Auxiliary Diesel Generator	: 1 x 150kW, 440V 60Hz 3 Phase
Air Compressors	: 72kW, 440V 60Hz 3 Phase Approx. 2000cfm @ 10 bar
Fresh Water Maker (RO)	: 2 x 80 T/day with UV sterilizer
Oil Water Separator	: 1 unit, 5 m ³ /hr 15ppm, IMO approved
Sewage Treatment Plant	: 2 units, DVZ-SKA-150 Bio Master suitable to handle 300 men and comply with USCG / IMO

Tank Capacities

SWB/FW Tank (non-potable)	: 15,000 m ³ approx.
FW Tank (Potable)	: 2000 m ³ approx.
F.O. Tank	: 1900 m ³ approx.
Dirty Oil Tank	: 50 m ³ approx.
Hydraulic Oil Tank	: 10 m ³ approx.
Lube Oil Tank	: 10 m ³ approx.

Pumps

Ballast Pump	: 3 nos. 1000 m ³ /hr, 30m Head
FO Transfer Pump	: 45 m ³ /hr, 45m Head
Fresh Water Transfer Pump	: 30 m ³ /hr, 35m Head
Sewage Discharge Pump	: 14 m ³ /hr, 30m Head
Dirty Oil Pump	: 3 m ³ /hr, 30m Head
Bilge Pump	: 30 m ³ /hr, 25m Head
Fire & GS Pump	: 130 m ³ /hr, 80m Head
Emergency Fire Pump	: 75 m ³ /hr, 68m Head

Safety Equipment

36 x 25 Men Life Rafts	: 18 nos. placed on both sides STBD & Port
Life Jackets	: 200% coverage of the total maximum personnel onboard
Life Buoys	: 21 nos.
Rescue Boat (FRC)	: Vanguard 25hp, 6 men

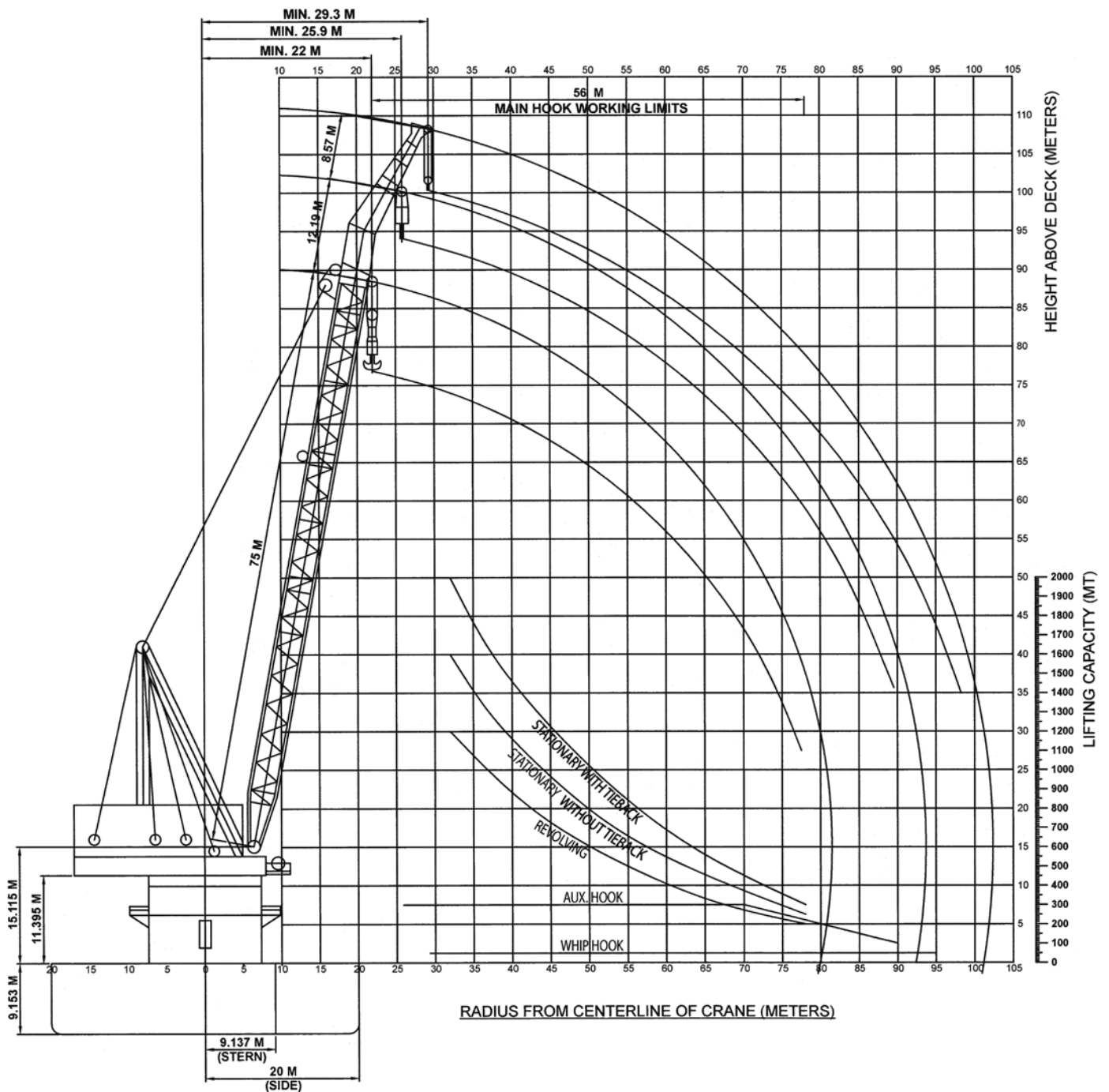
Radio Communications Equipment

VHF radio (dual watch facility)	: 2 nos. Model 3DB
MF/MF Radio Telephone	: 1 no. Model FS-1503
Radar Transponder (SART)	: 2 nos. Model M72
Two-Way Handheld VHF Radios	: 12 nos.
Emergency Position Indicating Radio Beacon (EPIRB)	: 1 no. E5 Smartfind

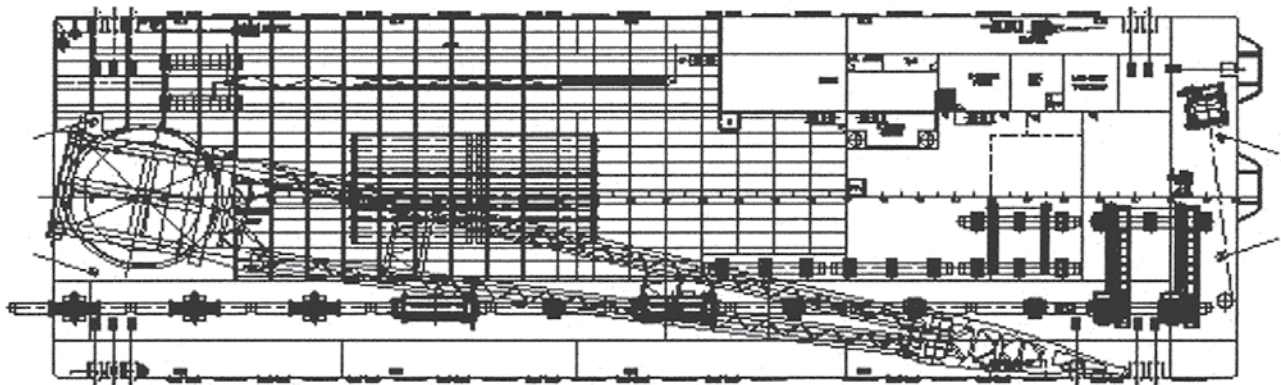
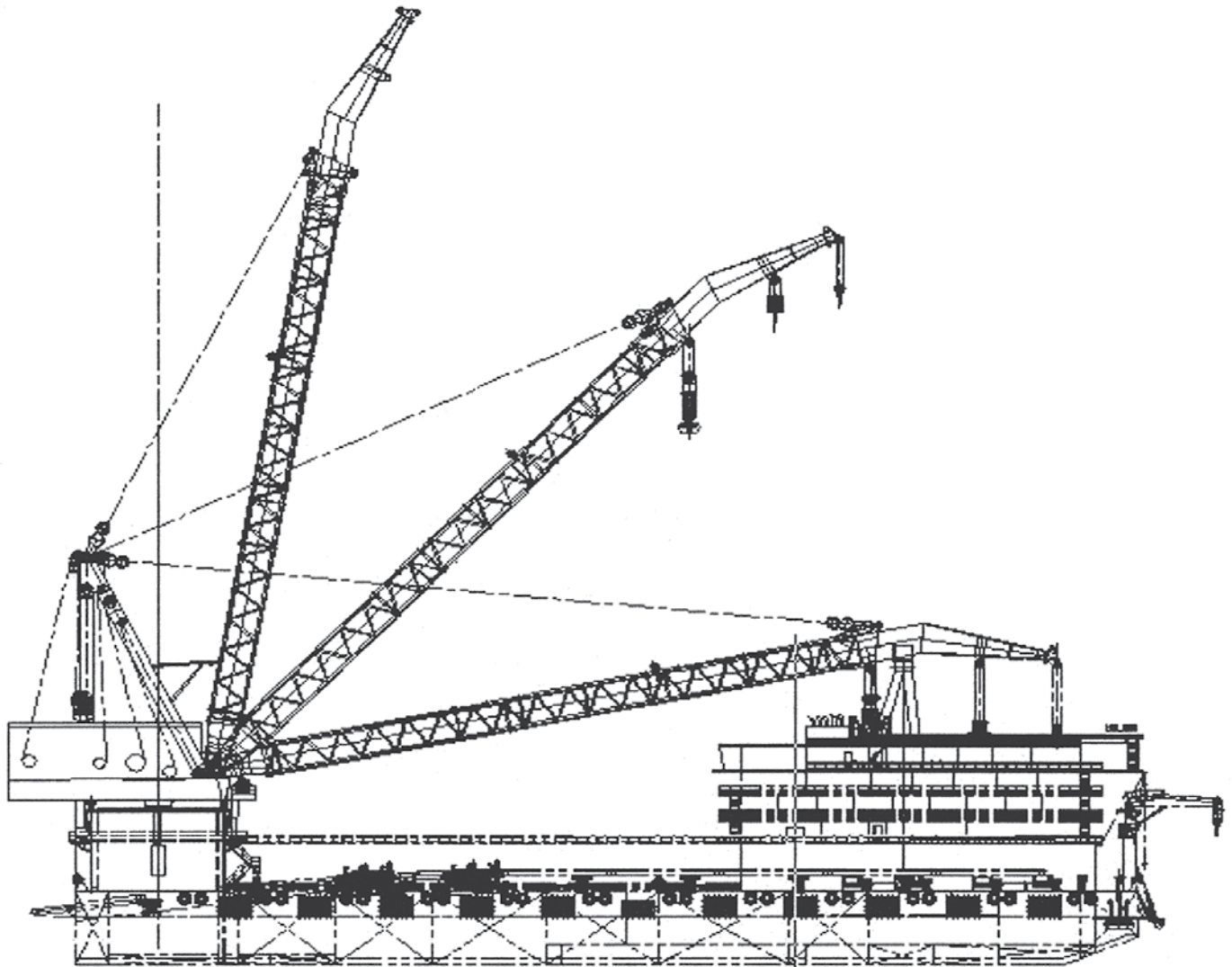
Helicopter Navigation System

Helideck Capable of Handling S92 Sikorsky Helicopter	
VHF AM Transceiver	: 1 no. (Model A200, 131MHz & 130MHz)
Non-Directional Radio Beacon	: 1 no. (SA 100, 100 Watts RF output)
Aviation Portable Radio Sets	: 2 nos. (A24, Complete with microphone)
Walkie Talkie	: 6 nos.

SAPURAKENCANA 2000



SAPURAKENCANA 2000



MAIN DECK

** This vessel specification is given in good faith & assumed correct. Details given are without guarantee.

** Owners reserve the right to amend the specifications without notification.