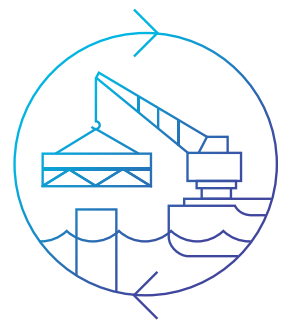




# Sapura 2000

## Derrick Pipelay Barge



Learn more at [www.sapuraenergy.com](http://www.sapuraenergy.com)

# Derrick Pipelay Barge

## Sapura 2000



### Principle Dimensions

Classification :	ABS#A1 Barge, Pipelay/Heavylift
Flag :	Malaysia
Total Length :	120 m
Breadth Moulded :	40.1 m
Depth Moulded :	9 m
Draft Designed :	6 m
Main Deck Strength :	12.5 to 15 tonnes / m <sup>2</sup>
Free Deck Area :	2,000 m <sup>2</sup>

### Accommodation

8 x 1 Berth Cabins :	8 men
14 x 2 Berth Cabins :	28 men
66 x 4 Berth Cabins :	264 men
Total :	300 men
Recreation Rooms :	2 ea (for clients & crew) complete with TV/video room, prayer room
Galley :	150 men seating
Office / Conference Rooms :	12 ea

### Pipelay Capabilities

Pipe OD :	6" to 60"
Tension Capacity :	140 MT (2 nos. x 70 MT each)
Tension Capacity-1 A & R Winch :	150 MT
Welding Station :	5 nos.
NDT Station :	1 no.
Field Joint Stations :	2 nos.
Davits :	6 nos. x 50 MT

### Stinger

Type of Stinger :	Articulated 4 section Ballastable Stinger
-------------------	---

### Main Crane

Main Hook Capacity Tie-Back :	2,000 MT @ 32 m
Main Hook Capacity Fixed :	1,600 MT @ 32 m
Main Hook Capacity Revolving :	1,200 MT @ 32 m
Aux. Hook Capacity :	500 MT @ 84.2 m
Whip Hook Capacity :	50 MT @ 98.7 m
Boom Length to Main Hook :	75.00 m
Boom Length to Auxiliary Hook :	87.20 m
Boom Length to Whip Hook :	95.77 m

### Crawler Crane

250T :	1 each
Crane Boom Length :	42.7 m

### Mooring System - 100T Max.

150T Mooring Winches (Electrical) :	12 nos.
Mooring Anchors :	13 nos. x 12 MT (Delta Flipper)
Storm Anchor :	1 no. 10 MT

### Machinery

Main Generators :	6 x 1230 kW, 440 V 60 Hz 3 Phase
Emergency Diesel Generator/ Auxiliary Diesel Generator :	1 x 150 kW, 440 V 60 Hz 3 Phase 72 kW, 440 V 60 Hz 3 Phase
Air Compressors :	Approx. 2,000 cfm @ 10 bar 2 x 75 T/day
Fresh Water Maker (RO) :	1 unit, 5 m <sup>3</sup> /hr 15 ppm, IMO approved
Oil Water Separator :	2 units, DVZ-SKA-150 Bio
Sewage Treatment Plant :	Master suitable to handle 300 men and comply with USCG / IMO

### Tank Capacities

SWB/FW Tank (non-potable) :	15,000 m <sup>3</sup> approx.
FW Tank (Potable) :	2,000 m <sup>3</sup> approx.
F.O. Tank :	1900 m <sup>3</sup> approx.
Dirty Oil Tank :	50 m <sup>3</sup> approx.
Hydraulic Oil Tank :	10 m <sup>3</sup> approx.
Lube Oil Tank :	10 m <sup>3</sup> approx.

### Pumps

Ballast Pump :	3 nos. 1,000 m <sup>3</sup> /hr, 30 m Head
FO Transfer Pump :	45 m <sup>3</sup> /hr, 45 m Head
Fresh Water Transfer Pump :	120 m <sup>3</sup> /Hr @ 35m head
Sewage Discharge Pump :	14 m <sup>3</sup> /hr, 30 m Head
Dirty Oil Pump :	3 m <sup>3</sup> /hr, 30 m Head
Bilge Pump :	30 m <sup>3</sup> /hr, 25 m Head
Fire & GS Pump :	134 m <sup>3</sup> /hr @ 80m head
Emergency Fire Pump :	72 m <sup>3</sup> /Hr @ 65m head

### Safety Equipment

36 x 25 Men Life Rafts :	18 nos. placed on both sides STBD & Port
Life Jackets :	200% coverage of the total maximum personnel onboard
Life Buoys :	21 nos.
Rescue Boat (FRC) :	Vanguard 25 HP, 6 men

### Radio Communications Equipment

VHF radio (dual watch facility) :	2 nos. Model 3DB
MF/MF Radio Telephone :	1 no. Model FS-1503
Radar Transponder (SART) :	2 nos. Model M72
Two-Way Handheld VHF Radios :	12 nos.
Emergency Position Indicating :	1 no. E5 Smartfind
Radio Beacon (EPIRB) :	

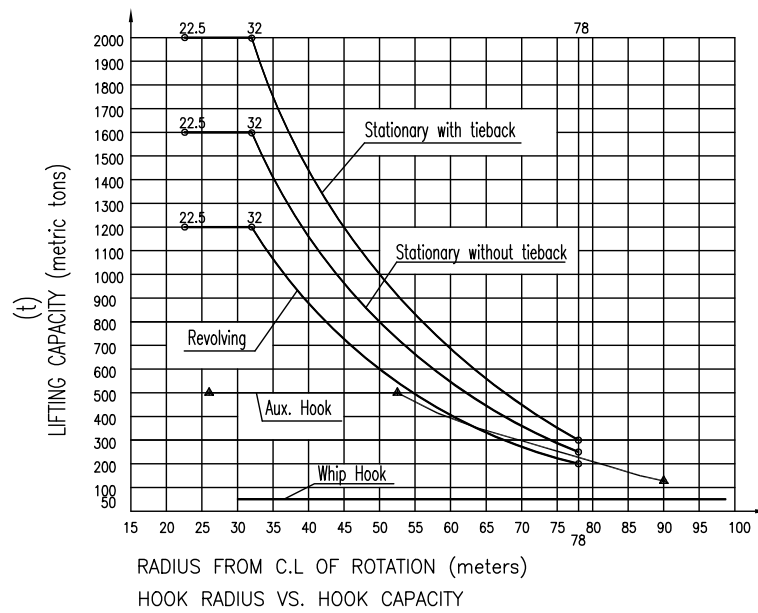
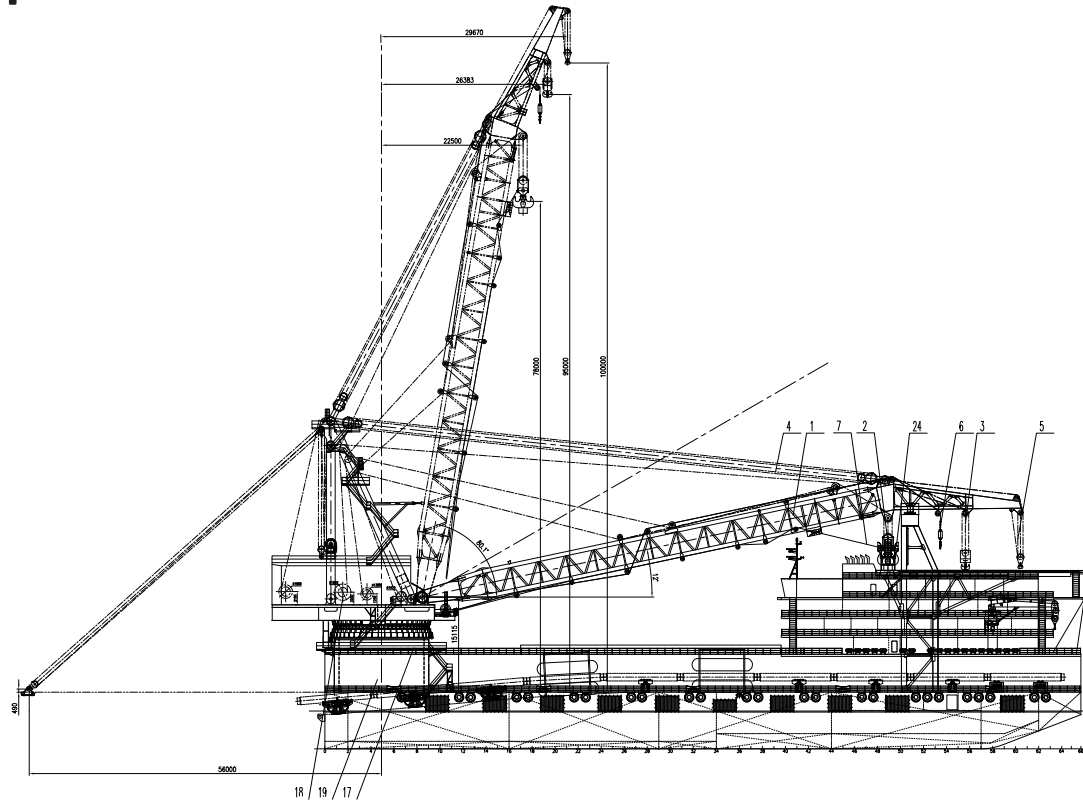
### Helicopter Navigation System

Helideck Capable of Handling S92 Sikorsky Helicopter	
VHF AM Transceiver :	1 no. (Model A200, 131 MHz & 130 MHz)
Non-Directional Radio Beacon :	1 no. (SA 100, 100 Watts RF output)
Aviation Portable Radio Sets :	2 nos. (A24, Complete with microphone)
Walkie Talkie :	6 nos.

\*\* This vessel specification is given in good faith @ assumed correct.  
Details given are without guarantee.

\*\* Owner reserves the rights to amend the specifications without notification.

# Sapura 2000



## Lifting Capacity (mt)

Angle of Boom (°)	Radius of M.H. (m)	M.H. Lifting height above main deck(m)	M.H.Lifting Capacity (t) --Stationary with tieback	M.H.Lifting Capacity (t) --Stationary without tieback	M.H.Lifting Capacity (t) --Revolving	Radius of Aux.H. (m)	Aux.H. Lifting height above main deck(m)	Aux.H. Lifting Capacity (t)
80.06	22.5	78.0	2000	1600	1200	26.4	95.0	500
78.10	25	77.4	2000	1600	1200	29.3	94.3	500
74.12	30	76.0	2000	1600	1200	35.1	92.5	500
72.50	32	75.3	2000	1600	1200	37.4	91.6	500
70.05	35	74.1	1750	1420	1080	40.9	90.2	500
65.86	40	71.9	1450	1180	890	46.6	87.5	500
61.51	45	69.1	1200	980	720	52.4	84.2	500
56.95	50	65.9	1000	800	600	58.2	80.4	415
52.11	55	62.0	820	650	500	63.9	75.8	350
46.91	60	57.3	700	550	410	69.7	70.3	300
41.16	65	51.7	550	450	320	75.4	63.7	250
34.59	70	44.7	450	380	280	81.1	55.4	200
26.50	75	35.4	350	300	220	86.7	44.5	150
20.09	78	27.5	300	250	200	90.1	35.3	130
0.0	81.5	-	-	-	-	93.7	-	-